

Highway Care

Highway Care Limited

Eastern Office

The Highlands Detling Hill Detling Maidstone Kent
ME14 3HT

e.mail: info@highwaycare.co.uk
www.highwaycare.co.uk

Tel: +44 (0) 1622 734215 Fax: +44 (0) 1622 735106

Western Office

Unit D Wharton Court Leominster Herefordshire
HR6 0NX

e.mail: enquiry@highwaycare.co.uk
www.highwaycare.co.uk

Tel: +44 (0) 1568 610909 Fax: +44 (0) 1568 620007

Demountable Steel Step Barrier (DSSB)

Technical Information Pack - (18-04-2009)

The Demountable wheeled Steel Step Barrier system (DSSB) provides a removable steel barrier section within a permanent step barrier installation to form Emergency Crossing Points (ECP) or Maintenance Crossing Points (MCP). DSSB listed in the Highways Agencies "HA Accepted EN1317 Compliant Road Restraint Systems", has a Containment Level of H2 with a working width of W2. It can be installed directly to permanent step barrier installations without complex transitions, maintaining continuous H2 performance and comparable Working Widths. The system is quick to install and operate. A clear opening installation of 22.8 metres can be removed for access by two operatives using hand tools in 20 minutes

This Document includes the following items:-

DSSB Product Information Sheet
DSSB System Details

Demountable Steel Step Barrier



The Demountable wheeled Steel Step Barrier System (DSSB) provides a removable steel barrier section within a permanent step barrier installation and is included in the Britpave Concrete Step Barrier Design details. Approved by the Highways Agency to H2 Containment Level, Working Width W2, this allows installation direct to concrete step barrier without complex transitions, maintains continuous H2 performance and comparable working widths. All or part of the DSSB installation can be demounted as required. The DSSB profile matches the concrete step barrier preventing build up of debris, allowing clear safe openings during emergencies. A typical 4 section array gives a clear opening of 22.80 metres and can be opened and removed in 20 minutes by two operatives using only hand tools.



DSSB sections are 5450mm long x 540mm wide (at base) x 900mm high. Connection Units are the same profile and are 500mm long. Each DSSB section has two extendable wheel sets allowing longitudinal and lateral movement. Each DSSB section is secured to the carriageway with four stainless steel anchors and bolts and bolted to adjacent DSSB sections or Connection Units. The Connection Units are bolted to the concrete step barrier ends with stainless steel anchors and bolts allowing complete system removal. Installation can be carried out within a normal road closure without the use of heavy equipment. Once the system is offloaded at the installation site all subsequent positioning can be achieved with the system wheels.



© Highway Care 18-04-2009

Highway Care Ltd

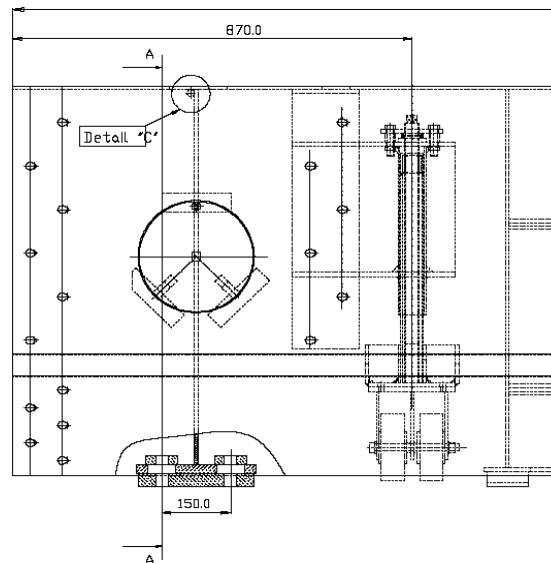
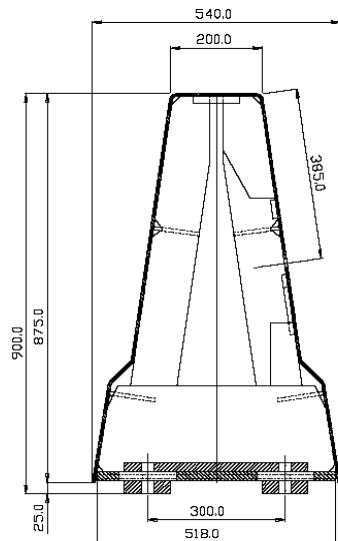
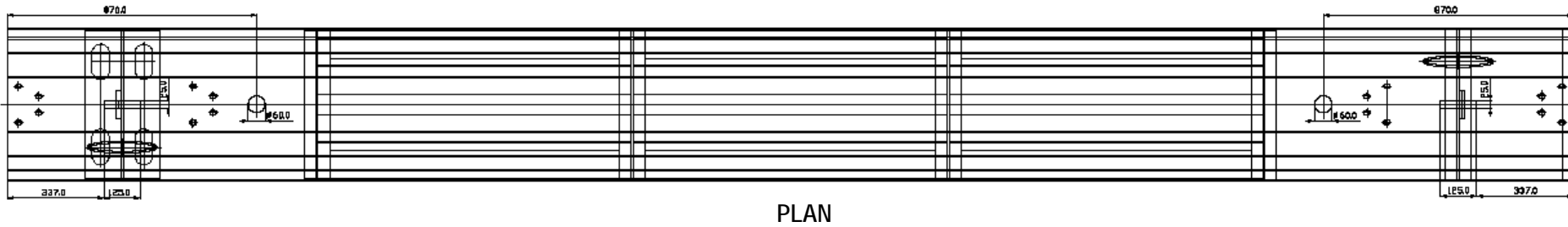
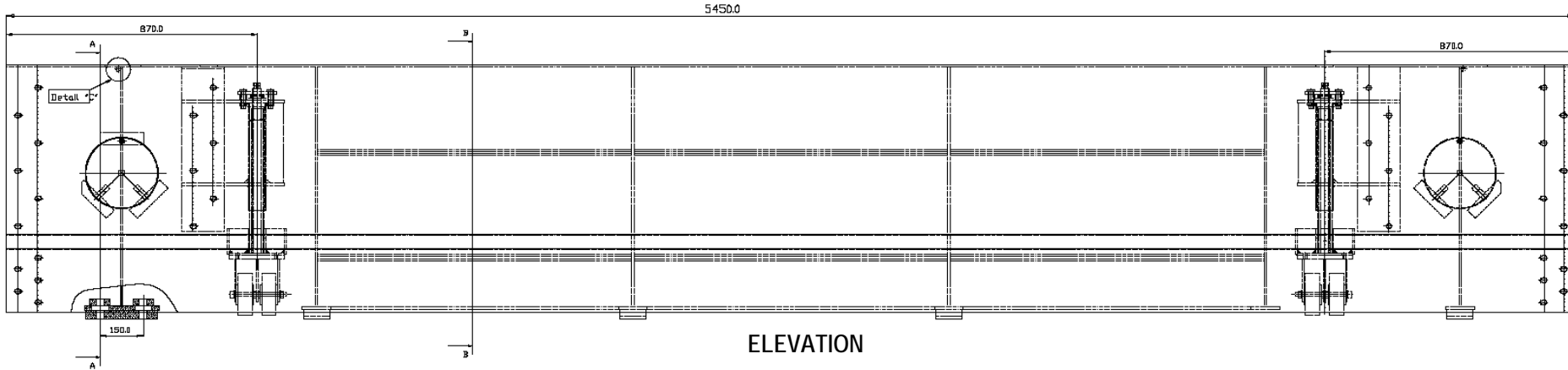
The Highlands • Detling Hill
 Detling • Maidstone • Kent • ME14 3HT
 Tel: +44 (0) 1622 734215 • Fax: +44 (0) 1622 735106
 E-mail: info@highwaycare.co.uk • www.highwaycare.co.uk

Unit D • Wharton Court
 Leominster • Herefordshire • HR6 0NX
 Tel: +44 (0) 1568 610909 • Fax: +44 (0) 1568 620007
 E-mail: enquiry@highwaycare.co.uk • www.highwaycare.co.uk



Highway Care

Demountable Steel Step Barrier Details



© Highway Care 18-04-2009

