

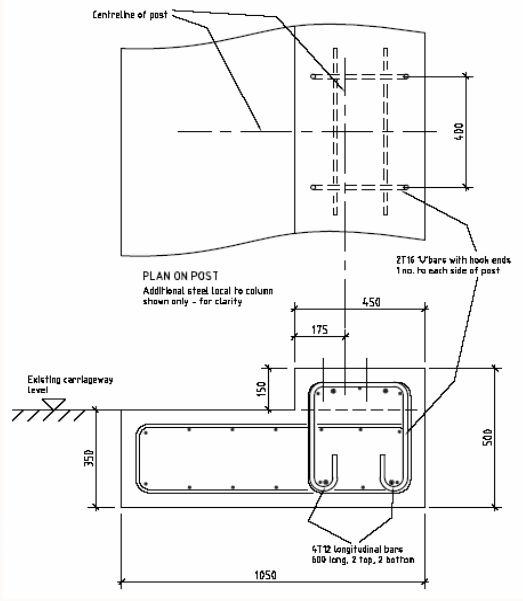
Half Step Steel Barrier Installation



The Half Step Barrier (HSSB) system is approved for H2 Containment W1 Working Width applications when mounted on a raised concrete plinth of 150mm high. The barrier is 370mm deep from front face to rear face of the post. Each barrier section is 5330mm long with a mass of approximately 470kg (88kg/m).



The barrier sections are mounted on four vertical steel posts per section. A 25mm thick steel Anchorplate is mounted onto the concrete plinth and fixed with M24 Stud Anchors. The posts have an attached base plate which then fastens to the Anchorplate with four M24 Post Bolts. This method of fixing ensures that impacts in excess of the design limits will reduce possible damage to the plinth construction.



The plinth can be incorporated into a base slab which suits site ground conditions as typical detail. Highway Care can also supply site specific drawings. The plinth base should generally be 1050mm wide, allowing normal barrier setback and W1 working width.



HSSB can be connected to standard roadside barrier systems using the connection shown. It can also be connected to CSB with Connection Pieces shown on 'Step Barrier Installation' sheet. They are supplied with slotted connector plates to allow expansion, contraction and additional fixing tolerance. Extra sets of slotted plates can be provided to accommodate bridge movement joints elsewhere along barrier runs, however their use should be limited to two sets per barrier run (please contact for further advice).

© Highway Care 11-09-2008

Highway Care Ltd

The Highlands • Detling Hill
 Detling • Maidstone • Kent • ME14 3HT
 Tel: +44 (0) 1622 734215 • Fax: +44 (0) 1622 735106
 E-mail: info@highwaycare.co.uk • www.highwaycare.co.uk

Unit D • Wharton Court
 Leominster • Herefordshire • HR6 0NX
 Tel: +44 (0) 1568 610909 • Fax: +44 (0) 1568 620007
 E-mail: enquiry@highwaycare.co.uk • www.highwaycare.co.uk



Highway Care

Half Step Steel Barrier

